



TheGreenBow IPsec VPN Client

Deployment Guide

WebSite: <http://www.thegreenbow.com>

Contact: support@thegreenbow.com

Table of Content

1	Introduction.....	3
2	VPN Client Software Deployment.....	4
2.1	What is a "silent" VPN Client Setup	4
2.2	How to create a "silent" VPN Client Setup?	4
2.3	How to Deploy a VPN Client Setup from a CD-Rom?	5
2.4	How to run a VPN Client Setup from a shortcut (double-click on an icon)?	5
2.5	How to Deploy a VPN Client Setup using Batch script.....	6
2.6	How to Deploy a VPN Client Setup from a Network Drive?	6
2.7	How to deploy a VPN Client Software Update?	7
3	VPN Client software customized for end-users	8
3.1	Introduction to VPN Client Setup customization for end-users?	8
3.2	How to limit VPN Client usage to Connection Panel from software menus?.....	8
3.3	How to limit VPN Client usage to Connection Panel within VPN Client Setup?	9
3.4	How to limit VPN Client usage to Connection Panel from the installation?	9
3.5	How to limit VPN Client usage to the systray icon from the installation?	9
4	VPN Configuration Deployment.....	10
4.1	How to embed a specific VPN configuration into the VPN Client Setup?.....	10
4.2	How to deploy a new VPN Configuration?	10
4.3	How to protect a VPN Configuration before deployment?.....	10
5	VPN Automations	12
5.1	How to create a batch/script that automatically opens or closes a tunnel?.....	12
5.2	How to automatically open a web page when the VPN tunnel opens?	12
5.3	How to open a tunnel with a double-click on a desktop icon?.....	13
5.4	What is the difference between "/import" and "/importonce"?	13
6	Reference Manual	14
6.1	VPN Client Setup command line options	14
6.2	VPN Client software command line options	17
7	Support.....	20

1 Introduction

TheGreenBow VPN Client software is designed to be easily deployed and managed. It implements several functionalities which enable the IT Manager to pre-configure the setup before deployment, to remotely install or upgrade the software, and to centrally manage VPN Configurations.

This document describes the management and configuration options of TheGreenBow VPN Client. It especially describes a set of use cases which illustrate the way to manage the software. These use cases are describes in "How to" items, summarized below.

Various options can be configured during the installation process of TheGreenBow VPN Client:

- License number
- VPN Client start mode
- Invisible graphical user interface
- Activation email
- and others..

Additional options can be used with the software itself, for example, once the installation is completed:

- VPN Configuration importation
- Start/Stop the software
- Start/Stop a VPN tunnel
- and others..

You may want to deploy Installation Package via several media:

- Network drive so that users can download and install VPN Client with a simple double click on an icon
- CD ROM disk so that users can insert and VPN Client installation will run automatically (AutoPlay)
- USB Stick drive so that IT managers can carry the installation package with them, insert the USB Stick into user laptop and installation will run automatically (AutoPlay)

All features described in this document are applicable to TheGreenBow IPSec VPN Client 4.2 and further.

For previous software release, look on our website for a previous version of this document.

2 VPN Client Software Deployment

VPN Client software deployment mainly uses the capability of the setup to be run "silently", which means without any questions to the user during installation.

To improve the transparency of the installation, the VPN Client Setup enables the use of command line options, which may be used to customize this installation. These command line options are fully detailed in the annexe, and are also described in the following various use cases.

2.1 What is a "silent" VPN Client Setup

A "silent" VPN Setup, also know as "silent" installation, is an installation which is processed automatically without any questions/inputs from the user. TheGreenBow VPN Client Setup is designed to be installed silently.

A silent installation uses a set of installation parameters which are provided via command line options.

The following chapters describe the way to configure the installation configuration file and the meaning of each available command line options.

2.2 How to create a "silent" VPN Client Setup?

1 Download TheGreenBow_VPN_Client.exe setup from www.thegreenbow.com.

2 To create a silent installation, open a command window, then enter the following command line:

Syntax: [software path]setup.exe /S --lang=1036 --license=123456789 --start=1 /D=[install path] (+ command line options see section 6.1)

Where:

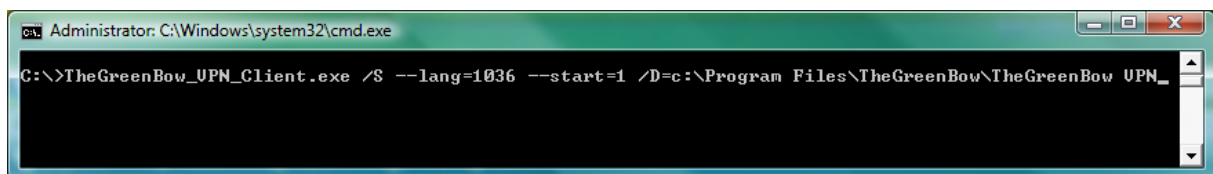
[software path] is the path to the setup software.

[install path] is the path to the directory where software must be installed.

Usage: Enables a silent installation (no dialog are displayed to the user during the installation)

Example:

```
C:\Users\bob\Downloads\TheGreenBow_VPN_Client.exe /S --lang=1036 --license=123456789 --start=1 /D=c:\Program Files\TheGreenBow\TheGreenBow VPN
```



Note: the directory specified after the /D switch must be specified entirely. This switch doesn't recognize a relative directory. The /D switch MUST be the last switch in the command line.

Note: Command-line options that require a parameter must be specified with no space between the option and its parameter. Quotation marks around an option's parameter are required only if the parameter contains spaces, except for [install path] which do NOT need quote if there are spaces in the path.

2.3 How to Deploy a VPN Client Setup from a CD-Rom?

1 Create a "silent" VPN Client Setup (see section 2.2)

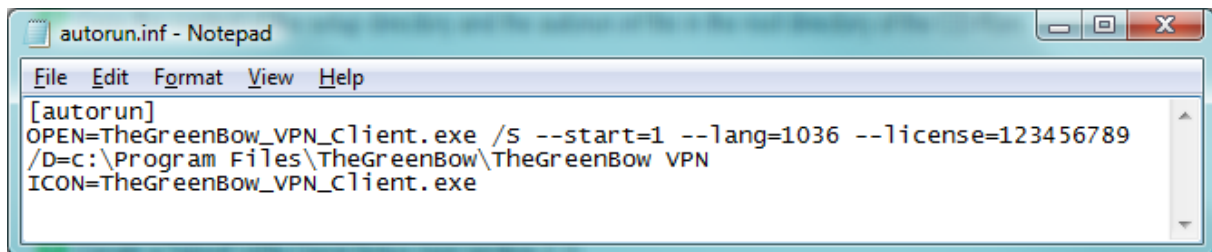
2 Create an "autorun" file

Create a text file called "autorun.inf". This file is used by the system, upon CD-Rom insertion, to automatically run TheGreenBow IPsec VPN Client software installation.

The "autorun.inf" file shall have the following content:

```
[autorun]
OPEN=[cdpath\]TheGreenBow_VPN_Client.exe /S /D=c:\Program
Files\TheGreenBow\TheGreenBow VPN (+ command line options see section 6.1)
ICON=[cdpath\]TheGreenBow_VPN_Client.exe
```

Example:



3 Copy the content of the setup directory and the autorun.inf file in the root directory of the CD-Rom.

Note: See section 6.1 for details about the available command line options.

2.4 How to run a VPN Client Setup from a shortcut (double-click on an icon)?

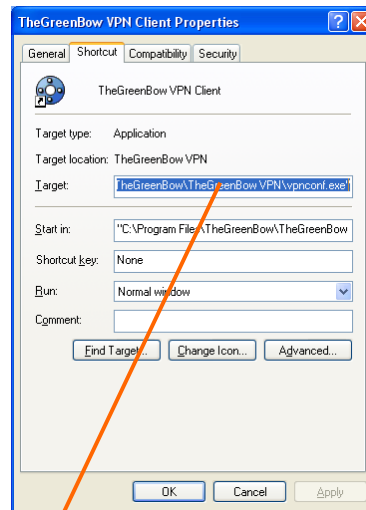
1 Create a "silent" VPN Client Setup (see section 2.2)

2 Right-click on the "setup.exe" file in the setup directory, and from the pop-up menu, select "Create Shortcut". This will create a shortcut to "setup.exe" in the setup directory.

3 Right-click on the new shortcut, and from the pop-up menu, select Properties.

In the Target field, add the following options to the command line `/S --start=1 --lang=1036 --license=123456789 /D=[install path]` (see details on section 2.2).

Example:



"C:\Users\bob\Downloads\TheGreenBow_VPN_Client.exe /S --lang=1036 --license=123456789 --start=1 /D=c:\Program Files\TheGreenBow\TheGreenBow VPN"

Important: Make sure to place space characters between each argument

- 4 Move the shortcut where it can be clicked by the user (e.g. on the desktop)

2.5 How to Deploy a VPN Client Setup using Batch script

- 1 Create a "silent" VPN Client Setup (see section 2.2)
- 2 Create a text file with a ".bat" extension (e.g. "VPN Client Setup.bat") and edit this file (right-click on the file and select "modify") with the command line you want to be processed.

Example:

```
cd .\setup
setup.exe /S --lang=1036
cd ..
copy myvpnconfig.tgb C:\Program Files\TheGreenBow\TheGreenBow VPN
cd C:\Program Files\TheGreenBow\TheGreenBow VPN
vpnconf.exe /importonce:myvpnconfig.tgb
```

- (1) in this example, the setup directory is called "setup" and is located under the directory containing the batch file.
- (2) in this example, a VPN Configuration is imported at the end of the installation. See further sections for details about the import capabilities of the VPN Client Software.

- 3 Deploy this file (from a server or on an USB stick) together with the setup directory to the users.

2.6 How to Deploy a VPN Client Setup from a Network Drive?

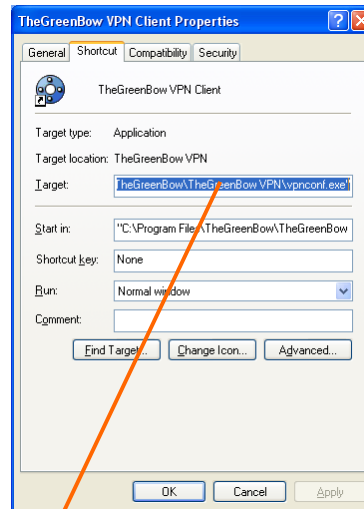
- 1 Create a "silent" VPN Client Setup (see section 2.2) on a network drive.

2 Right-click on the "setup.exe" file in the setup directory, and from the pop-up menu, select "Create Shortcut". This will create a shortcut to "setup.exe" in the setup directory.

3 Right-click on the new shortcut, and from the pop-up menu, select Properties.

In the Target field, add the following options to the command line: /S --start=1 --lang=1036 --license=123456789 /D=[install path] (see details on section 2.2).

Example:



```
"F:\TheGreenBow_VPN_Client.exe /S --start=1 --lang=1036 --license=123456789 /D=C:\Program Files\TheGreenBow\TheGreenBow VPN"
```

Important: Make sure to place space characters between each argument.

4 Move the shortcut where it can be clicked by the user (e.g. on the desktop)

2.7 How to deploy a VPN Client Software Update?

We've changed our installation software, therefore we shall consider two cases for silent installation of software upgrades.

1) Upgrade from any software release prior to TheGreenBow IPSec VPN Client 4.2: the un-installation can NOT be silent and the user will have to click on 'Accept un-installation' and 'Close' (without reboot) at the end of un-installation. The rest of upgrade installation will be silent.

2) Upgrade from TheGreenBow IPSec VPN Client 4.2 software release and further: the whole un-install and installation is silent, no action required from user. Just launch silent installation for the new software release.

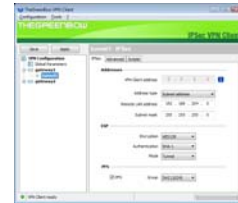
3 VPN Client software customized for end-users

3.1 Introduction to VPN Client Setup customization for end-users?

TheGreenBow VPN Client software may be used by end-users through three graphical user interfaces:

1) The Configuration Panel.

This interface (typically designed for the IT Manager) can be hidden or protected by a password.



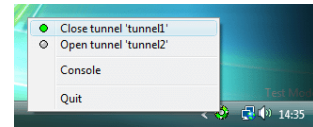
2) The Connection Panel .

This interface enables to open/close tunnels and to collect simple warning messages on VPN connection troubles. This interface can also be hidden.



3) The systray menu

The items of the systray menu may be hidden (the tunnels are always shown).



These modes enable the IT Manager to hide the configuration part of the software, in order to show a very simple interface to end-users, while preventing mis-use of the VPN configuration from end-users.

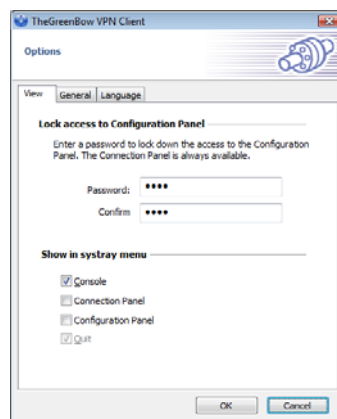
Note: The VPN Configuration is signed and encrypted. Any manual editing of the file disables the VPN Configuration.

This section describes the VPN Client setup or VPN Client software options which enable to hide or limit the interface of the software.

3.2 How to limit VPN Client usage to Connection Panel from software menus?

The Configuration Panel can be hidden or protected with a password. This mode can be configured from the software:

- 1 In the Configuration Panel, go to the menu "Tools > Options > View", enter and confirm a password. It is also possible to limit the number of items in the systray menu.



- 2 Switch to the "Connection Panel" (Ctrl + ENTER)

- 3 Optionally close the Connection Panel.

From now on, only the Connection Panel will be displayed when the user opens the software (e.g. click on the systray icon). If the user wants to open the Configuration Panel - via Ctrl + ENTER or via the system menu of the Connection Panel - he will be systematically asked for the password.

3.3 How to limit VPN Client usage to Connection Panel within VPN Client Setup?

- 1 Add the option "**--guidefs=user**" to the setup command line (see details section 6.1).

Example: "TheGreenBow_VPN_Client.exe /S **--guidefs=user** /D=c:\Program Files\TheGreenBow\TheGreenBow VPN"

TheGreenBow IPSec VPN Client will start showing the "Connection Panel" after the installation reboot.



3.4 How to limit VPN Client usage to Connection Panel from the installation?

- 1 Add the option "**--guidefs=user**" to the setup command line (see details section 6.1).
- 2 Add the option "**--password=mypassword**" to the setup command line.

Example: "TheGreenBow_VPN_Client.exe /S **--guidefs=user --password=group2** /D=c:\Program Files\TheGreenBow\TheGreenBow VPN"

TheGreenBow IPSec VPN Client will start showing the "Connexion Panel" after the installation reboot, and the user won't be able to open the Configuration Panel, which is protected by the password.

3.5 How to limit VPN Client usage to the systray icon from the installation?

- 1 Add the option "**--guidefs=hidden**" to the setup command line (see details section 6.1).
- 2 Add the option "**--password=mypassword**" to the setup command line.

Example: "TheGreenBow_VPN_Client.exe /S **--guidefs=hidden --password=group2** /D=c:\Program Files\TheGreenBow\TheGreenBow VPN"

TheGreenBow IPSec VPN Client will start only showing the systray icon after the installation reboot, and the user won't be able to open the Configuration Panel, nor the Connection Panel, which are protected by the password. It will only be able to open/close VPN tunnels via the systray menu.

4 VPN Configuration Deployment

4.1 How to embed a specific VPN configuration into the VPN Client Setup?

The VPN Client Setup enables the IT Manager to embed a pre-configured VPN Configuration. This VPN Configuration will be automatically used by the VPN Client during the installation process.

The process to create such setup is the following:

- 1 Create a VPN Configuration with TheGreenBow VPN Client. This step doesn't need to be done on the target computer and may be processed on any computer where the VPN Client software has been installed, from which the configuration is exported.
- 2 Export the VPN Configuration (menu "Configuration > Export") and rename your configuration into conf.tgb.

Important: The exported VPN Configuration must not be protected with a password.

- 3 Add the VPN Configuration (duly configured "conf.tgb" file) to the directory where you intend to put setup on the target computer (i.e. where software will be installed). In case you intend to deploy software on an USB drive, copy the VPN Configuration onto the USB drive together with the setup software.
- 4 Deploy the package to the user (the ".tgb" VPN Configuration is imported during the setup) and execute the setup.

4.2 How to deploy a new VPN Configuration?

- 1 Create a VPN Configuration with TheGreenBow VPN Client. This step doesn't need to be done on the target computer.
- 2 Export the VPN Configuration (menu "Configuration > Export").

Important: The exported VPN configuration may be protected with a password.



- 3 Give the VPN Configuration to the end-user, either by email, or through file-sharing.
- 4 When the user opens the VPN Configuration (e.g. he opens the email attachment), he will be automatically asked for the password, and as the password is correctly entered, the VPN Configuration will be automatically imported and applied by TheGreenBow VPN Client.

4.3 How to protect a VPN Configuration before deployment?

A VPN Configuration can be exported from TheGreenBow VPN Client, in order to be deployed to all employees in the company.

- 1 Select the menu "Configuration > Export".
- 2 Select "Protect the exported VPN Configuration" and enter a password, then click on "Ok".



The exported VPN Configuration is encrypted. When the user will open it, he will be automatically asked for the password.

5 VPN Automations

5.1 How to create a batch/script that automatically opens or closes a tunnel?

From software release 4.1 and older, your batch/script can use a simple command line as followed:

```
vpnconf.exe /open:[NamePhase1-NamePhase2]  
vpnconf.exe /close:[NamePhase1-NamePhase2]
```

Before software release 4.1 (included), process as follows:

- 1 Create a VPN Configuration with "Open automatically when Client starts" selected for the relevant Phase 2 (Advanced Phase2 dialog)
- 2 Export the VPN Configuration in a file (e.g. "MyTunnel.tgb")
- 3 Add to your script the following command line: `vpnconf.exe /import:MyTunnel.tgb`

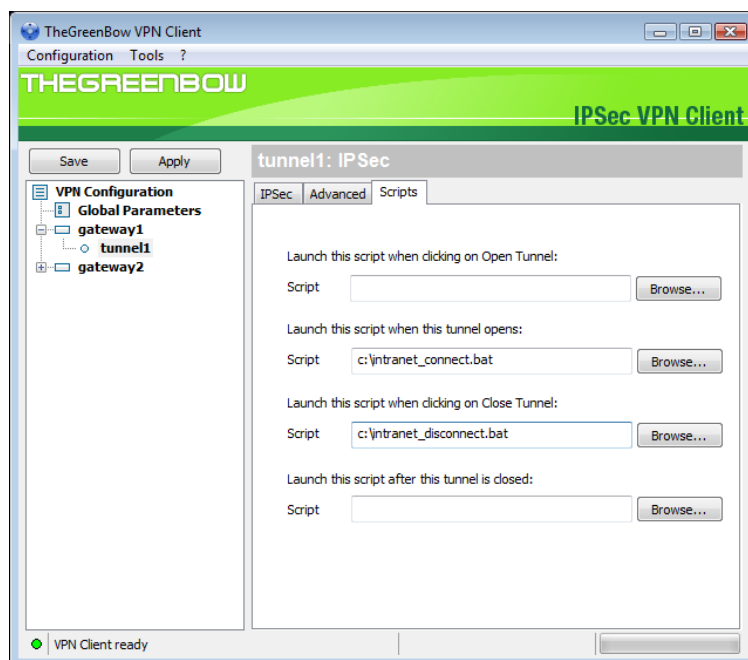
This script will start the VPN Client software with "MyTunnel" VPN Configuration, and will automatically open the tunnel.

To close a tunnel, the command line is: `vpnconf.exe /stop`.

This command line will quit the VPN Client while closing all the opened tunnels.

5.2 How to automatically open a web page when the VPN tunnel opens?

- 1 Create a VPN Configuration
- 2 Open the Phase2 "Scripts" window, and set the url of the web page (internet or Corporate Intranet) in the field: "Launch this script when this tunnel opens". See exemple below.
- 3 Save the configuration and open the tunnel: the web page is automatically opened as soon as the tunnel is opened.



5.3 How to open a tunnel with a double-click on a desktop icon?

It is possible to open a tunnel with a double-click on a desktop icon. This icon has just to be associated with a VPN Configuration:

- 1 Create a VPN Configuration with "Open automatically when Client starts" selected for the relevant Phase 2 (Advanced Phase2 dialog)
- 2 Export the VPN Configuration in a file (e.g. "MyTunnel.tgb"), and copy, move or shortcut this file on the desktop.

A double-click (open) on the desktop icon will run the VPN Client software with the VPN Configuration "MyTunnel", which will automatically open the tunnel.

5.4 What is the difference between `"/import"` and `"/importance"`?

The option `"/import"` enables to import a VPN Configuration and start the VPN Client software if it is not already running.

The option `"/importance"` enables to import a VPN Configuration without starting the VPN Client.

Both options import and update a VPN Configuration when the VPN Client software is already running, without stopping it.

6 Reference Manual

6.1 VPN Client Setup command line options

A set of command line options are available to customize the VPN Client setup.

Warning: all the options below must be used together with the option "/S" (silent mode).

Note: Command-line options that require a parameter must be specified with no space between the option and its parameter. Quotation marks around an option's parameter are required only if the parameter contains spaces.

6.1.1 /S (case sensitive)

Syntax: /S ("S" must be preceded by only 1 slash)

Usage: Enables a silent installation (no dialog are displayed to the user during the installation)

Example: "TheGreenBow_VPN_Client.exe /S"

6.1.2 /D (case sensitive)

Syntax: /D=[install path] ("D" must be preceded by only 1 slash)

Usage: [install path] is the path where to install the software. No quotation marks even if space in the path.

Warning: This options must be used with the option "/S" (silent mode). The /D option MUST be the last one in the command line if several options provided.

6.1.3 --license

Syntax: --license=[license_number] ("license" must be preceded by 2 dashes)

Usage: Enables to configure the license number. The license number can be a set of 24 or 20 hexadecimal characters, depending of the software release.

Example: TheGreenBow_VPN_Client.exe --license=1234567890ABCDEF12345678

6.1.4 --start

Syntax: --start=[1 | 2] ("start" must be preceded by 2 dashes)

Usage: Enables to configure the start mode for the VPN Client: after the logon windows [1], or manually [2]. Default is [1].

Example: TheGreenBow_VPN_Client.exe --start=2

6.1.5 --reboot

Syntax: --reboot=[1] ("reboot" must be preceded by 2 dashes)

Usage: Allows to reboot automatically after silent installation. Default is [1].

Example: TheGreenBow_VPN_Client.exe --reboot=1

6.1.6 --guidefs

Syntax: --guidefs=[full | user | hidden] ("guidefs" must be preceded by 2 dashes)

Usage: Enables to define the GUI appearance when the VPN Client software starts.

"full": The Configuration Panel is displayed. Default.

"user": The Connection Panel is displayed.

"hidden": The Configuration Panel and Connection Panel cannot be displayed. Only the systray menu can be opened. Tunnels can be opened with the systray menu.

Example: `TheGreenBow_VPN_Client.exe --guidefs=hidden`

6.1.7 --activmail

Syntax: --activmail=[activation_email] ("activmail" must be preceded by 2 dashes)

Usage: Enables to force the email used for activation confirmation. During the activation process, the edit box used for entering this email will be disabled

Example: TheGreenBow_VPN_Client.exe --activmail=salesgroup@company.com

6.1.8 --menuitem

Syntax: --menuitem=[0..31] ("menuitem" must be preceded by 2 dashes)

Usage: Enables to configure the items of the systray menu. The value is a bitfield, where each bit defines a menuitem: 1 (1st bit)=Quit, 2 (2nd bit)=Connection panel, 4 (3rd bit)=Console, 8 (4th bit)=Save&Apply, 16 (5th bit)=Configuration panel. Default is 31 (1F) : All menus.

Example: TheGreenBow_VPN_Client.exe --menuitem=3 will only show the "Quit" and "Connections" menu items.

Note 1: the tunnels are always shown in the systray menu, and can always be opened and closed from this systray menu.

Note 2: "--menuitem" might override "--guidefs=hidden".

By default, "--guidefs=hidden" set the systray menu to Quit + Console. (The items Save & Apply and Connection Panel are not visible). But "--menuitem" overrides "--guidefs". That means the following options: "--guidefs=hidden --menuitem=1" will set a systray menu with only the "Quit" item.

6.1.9 --password

Syntax: --password=[password] ("password" must be preceded by 2 dashes)

Usage: Enables to control the access to the VPN GUI with a password.

The user will be asked for the password:

- when the user clicks or double-clicks on the VPN systray icon.
- when the user wants to switch from the Connection panel to the Configuration panel.

Example: TheGreenBow_VPN_Client.exe --password=adm253q

6.1.10 --autoactiv

Syntax: --autoactiv=1

Usage: In case of software upgrade (i.e. license number and activation email have already been entered in previous installation) and --autoactiv=1 option is added, the software will try to activate software automatically when starting if network is available or when requesting to open a tunnel if network was not available at startup.

Example: TheGreenBow_VPN_Client.exe --autoactiv=1

Note: The option --autoactiv must be the last option in the command line.

6.1.11 --noactiv

Syntax: --noactiv=1

Usage: No display of the 'Trial window' once software started until trial period ends. User doesn't know he is in trial period and software will be disabled at the end of trial period. It means that if the user tries to launch the software after the end of trial period, the software will start and open the 'Trial window' but the 'Evaluate' button will be disabled.

Example: TheGreenBow_VPN_Client.exe --noactiv=1

6.1.12 --lang

Syntax: `--lang=[language code]`

Usage: This option specifies the language for the TheGreenBow IPSec VPN Client software and installation software. Available languages are listed below.

Example: `TheGreenBow_VPN_Client.exe --lang=1040` will start software in Italian.

ISO 639-2 code	Language code	Native name	English name
EN	1033 (default)	English	English
FR	1036	Français	French
ES	1034	Español	Spanish
PT	2070	Português	Portuguese
DE	1031	Deutsch	German
NL	1043	Nederlands	Dutch
IT	1040	Italiano	Italian
ZH	2052	简化字	Chinese simplified
SL	1060	Slovenscina	Slovenian
TR	1055	Türkçe	Turkish
PL	1045	Polski	Polish
EL	1032	ελληνικά	Greek
RU	1049	Русский	Russian
JA	1041	日本語	Japanese
FI	1035	Suomi	Finnish
SR	2074	српски језик	Serbian
TH	1054	ภาษาไทย	Thai
AR	1025	عبرع	Arabic
HI	1081	हिन्दी	Hindi
DK	1030	Danske	Danish
CZ	1029	Český	Czech
HU	1038	Magyar nyelv	Hungarian
NO	1044	Bokmål	Norwegian
FA	1065	یسراف	Farsi

6.2 VPN Client software command line options

TheGreenBow IPSec VPN Client enables to run command line options, used to open/close a tunnel, import a new VPN Configuration, etc...

A command line can be used in batch files, in scripts or in setup "inf" files as detailed in previous chapters.

The syntax of a command line option is always the same:

```
[install_directory]\vpnconf.exe [/option[:"value"]]
```

where ...

- "install_directory" is the installation directory of the VPN Client software.
- "value" does not require double quote if there it does not contain space characters.
- All available command line "options" are detailed below.

Please see best software implementation of command line on our [website](#) (e.g. Remote Desktop Manager from devolutions.net,..) & video tutorial.

6.2.1 /import

Syntax: /import:[ConfigFileName]

Usage: Enables the VPN Client to import a VPN Configuration. If the VPN Client software is not running, it is automatically started by this option. Thus, this option may be used to start the VPN Client with a given VPN Configuration.

If the VPN Client software is running, this option imports and updates the VPN Configuration without stopping the software.

[ConfigFileName] must be enclosed in double-quotes if it contains space characters.

Example: vpnconf.exe /import:"c:\my documents\myvpnconf.tgb"

From software release 4.1 and older, the user is asked for adding or replacing the new VPN Configuration. To avoid this question, /import can be replaced by the options /add or /replace described below.

6.2.2 /importonce

Syntax: /importonce:[ConfigFileName]

Usage: Enables the VPN Client to import a VPN Configuration. If the VPN Client software is not running, it won't be started by this option. Thus, this option may be used to import a given VPN Configuration without starting the VPN Client, for example within an installation script.

If the VPN Client software is running, this option imports and updates the VPN Configuration without stopping the software.

[ConfigFileName] must be enclosed in double-quotes if it contains space characters.

Example: vpnconf.exe /importonce:"c:\my documents\myvpnconf.tgb"

From software release 4.1 and older, the user is asked for adding or replacing the new Configuration. To avoid this question, /importonce can be replaced by the options /add or /replace described below.

6.2.3 /export

Syntax: /export:[ConfigFileName] /pwd:[Password]

Usage: Enables the VPN Client to export a VPN Configuration. If the VPN Client software is not running, it is automatically started by this option. Please note that /pwd: is mandatory.

If the VPN Client software is running, this option exports the VPN Configuration without stopping the software.

[ConfigFileName] must be enclosed in double-quotes if it contains space characters.

Example:

vpnconf.exe /export:"c:\my documents\myvpnconf.tgb" /pwd:gg1

6.2.4 /expportonce

Syntax: /expportonce:[ConfigFileName] /pwd:[Password]

Usage: Enables the VPN Client to export a VPN Configuration. If the VPN Client software is not running, it won't be started by this option. Please note that /pwd: is mandatory.

If the VPN Client software is running, this option exports the VPN Configuration without stopping the software.

[ConfigFileName] must be enclosed in double-quotes if it contains space characters.

Example:

vpnconf.exe /expportonce:"c:\my documents\myvpnconf.tgb" /pwd:gg1

6.2.5 /pwd

Syntax: /pwd:[Password]

Usage: Enables to set a password for import operations. This option can be used together with the /import, /importonce, /export, /exportonce, /add and /replace options but it must be placed after one of those options.

Example: vpnconf.exe /import:"c:\my documents\myvpnconf.tgb" /pwd=mypwd

6.2.6 /stop

Syntax: /stop

Usage: Enables to exit the VPN Client and close the opened VPN tunnels

Example: vpnconf.exe /stop

6.2.7 /add

Syntax: /add:[ConfigFileName]

Usage: Enables to add a VPN Configuration to the current configuration. This feature is available in software release 4.1 and older, and may be used instead of the /importonce option.

Example: vpnconf.exe /add:"c:\my documents\myvpnconf.tgb"

6.2.8 /replace

Syntax: /replace:[ConfigFileName]

Usage: Enables to replace the current configuration by a new VPN Configuration. This feature is available in software release 4.1 and older, and may be used instead of the /importonce option.

Example: vpnconf.exe /replace:"c:\my documents\myvpnconf.tgb"

6.2.9 /open

Syntax: /open:[NamePhase1-NamePhase2]

Usage: Enables to open a VPN tunnel.

Example: vpnconf.exe /open:Corporate-gateway1

6.2.10 /close

Syntax: /close:[NamePhase1-NamePhase2]

Usage: Enables to close a VPN tunnel.

Example: vpnconf.exe /close:"Home gateway-cn1" (double quote required because name contains a space caractere).

7 Support

Information and update are available at: www.thegreenbow.com

Technical support via email at: support@thegreenbow.com

Sales via email at: sales@thegreenbow.com