

# THEGREENBOW



# TheGreenBow VPN Client

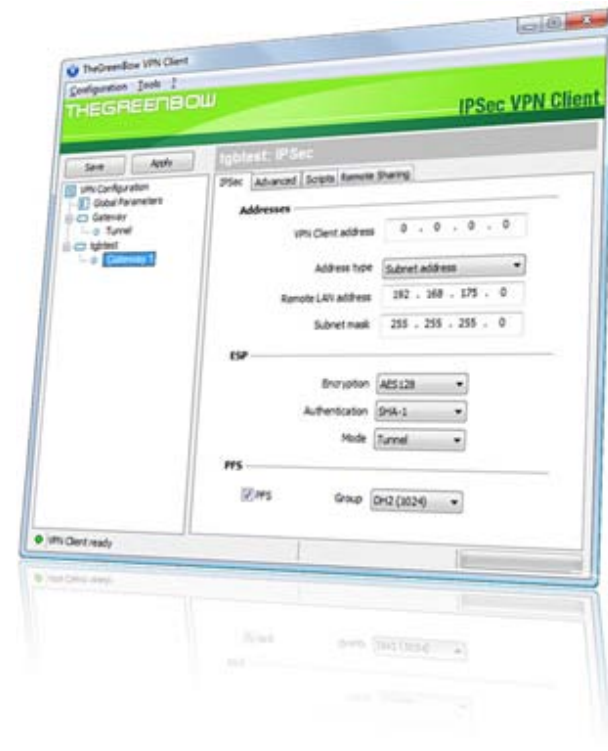
Secure, Strong, Simple

# IPSec VPN Client software



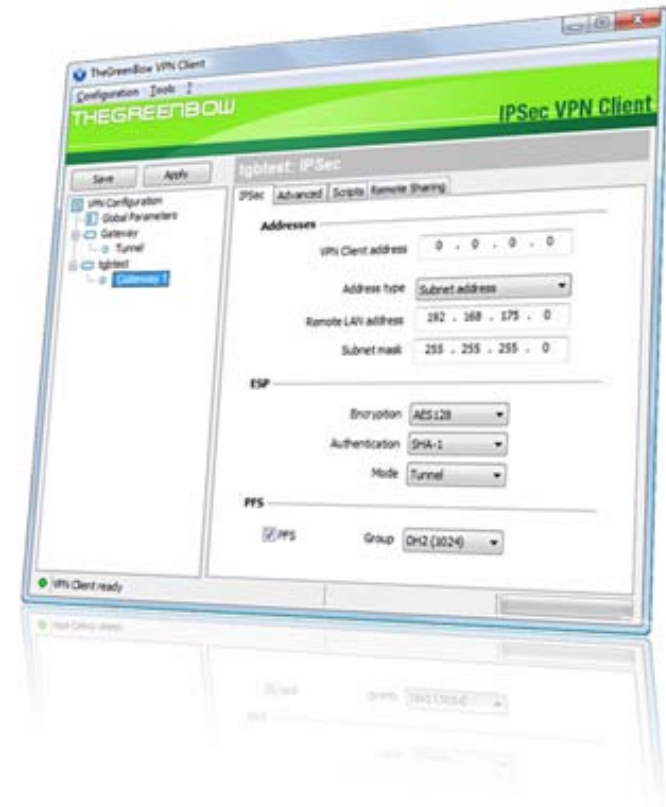
# Authentication and Keying

- Encryption & Hash algorithms
  - MD5-HMAC 128 bit authentication
  - SHA1-HMAC 160-bit authentication
  - DES-CBC 56 bit encryption
  - 3DES-CBC 168 bit encryption
  - AES 128, 192, 256 bit encryption
- Diffie Hellman Group Support
  - Group 1 : MODP 768
  - Group 2 : MODP 1024
  - Group 5 : MODP 1536
  - Group 14 : MODP 2048
- Authentication Mechanism
  - Preshared Key
  - X509 Certificate support
  - X-Auth
  - SmartCard & Token (Aladdin, ..)
  - Flexible Certificate Support (PEM, PKCS#12, ...)
- Key Management
  - ISAKMP (RFC2408)
  - IKE (RFC2409)
- IKE & IPSec Mode
  - ESP, Tunnel, Transport
  - Main, Agressive, Quick
  - Hybrid Authentication Method
- Config-Mode



# Networking

- **Networking**
  - NAT traversal (Draft1, 2 & 3) allows IPSec connection through a NAT device. Main mode & aggressive mode
  - NAT keep Alive, Payload NAT\_OA, IP address emulation
  - Forced NAT-T
  - Multi tunneling to several Gateways
  - Dead Peer Detection (DPD) support
- **Connection Technologies**
  - DSL, dial-up modem, GPRS-Edge-3G, Ethernet, PCMCIA cards, WIFI, etc...
- **Redundant Gateway**
  - Redundant gateway when primary is down or not responding. Use of DPD for fail over.
- **Peer to Peer**
  - Peer to Peer connections
  - Accepts incoming IPSec Tunnels
- **Blocking capabilities**
  - 'IPSec only' traffic filtering
  - Can block all other connections than the VPN connections.
- **Remote Desktop Sharing (RDP session)**
  - Multiple Remote Desktop Sharing sessions
  - The VPN tunnel automatically opened, and an RDP session is launched to reached the remote machine.
  - See it in short video [here](#).



# Deployment

- **USB stick mode**
  - All formats supported (SD, MMC, ...)
  - Auto close, Auto open IPsec tunnels when plug in or remove USB Stick
  - Security Elements (e.g. network configuration, shared key, certificates, ..) cannot be used on other computers
- **Config-Mode**
  - Automatically fetch remote network DNS, WINS server addresses.
- **Peer to Peer**
  - Peer to Peer connections
  - Accepts incoming IPsec Tunnels
- **Blocking capabilities**
  - 'IPsec only' traffic filtering
  - Can block all other connections than the VPN connections.
- **Management Options**
  - Access control to Configuration Panel
  - Can run fully invisible to users (hidden mode)
  - Set of command lines to make easier deployment and management
  - Capability to start before logon
  - Launch script when tunnel open or close



# Ecosystem

## Supported Platforms

- Windows Server 2003/2008, XP, Vista 32/64-bit, Seven 32/64-bit.
- Windows Mobile 5.0, Mobile 6 & 6.5



## Supported 100+ VPN Gateways

- Astaro, Bewan, Billion, Bintec, Cisco, D-Link, Efficient Network, Fortinet, FreeSwan, OpenSwan, GTA, Hotbrick, Linksys, Microsoft, Netasq, Netcelo, Netgear, Netscreen, Securepoint, Sonicwall, Speedtouch, Symantec, Tuxgate, Zyxel,...

## Supported USB Tokens & SmartCards

- ActiveIdentity, Aladdin, Alios, Gemalto, Oberthur, Safenet, ...

## Supported Languages

- Arabic, Chinese (simplified), Czech, Danish, Dutch, English, Farsi, Finnish, French, German, Greek, Hindi, Hungarian, Italian, Japanese, Norwegian, Polish, Portuguese, Russian, Serbian, Slovenian, Spanish, Thai & Turkish.

## Solution Partners





# Secure, Strong, Simple

TheGreenBow Security Software

 [Download](#)